

Kohta Ueno  
March 1, 2021

## Care & Feeding of Brick: Interior Insulation Retrofits of Mass Masonry Buildings



**BUILDINGENERGY BOSTON**  
FEBRUARY 28–MARCH 1 • WESTIN BOSTON SEAPORT DISTRICT • [NESEA.ORG/BE22](https://www.nesea.org/be22)  
Conference + Trade Show of the Northeast Sustainable Energy Association (NESEA)

1

### Course Description

Solid mass masonry buildings are a significant fraction of the existing building stock, and many contribute to the historic fabric of neighborhoods. However, with wall R-values of R-3 to R-5, they do not meet modern standards for energy efficiency and comfort. Insulating these buildings successfully—without causing long-term damage—is a vital part of the ‘toolkit’ for meeting energy and climate goals. This session will cover potential pitfalls and risks of interior insulation, including interstitial condensation, freeze-thaw damage, decay of embedded wood members, and surface water concentrations. We will then cover assemblies and details that work to control these risks.

2

## Learning Objectives

---

At the end of this course, participants will be able to answer:

1. Explain freeze-thaw and condensation risks associated with interior insulation of mass masonry buildings
2. Discuss potential decay risks in embedded wood members
3. Appraise various interior retrofit insulation assemblies for potential moisture risks
4. Interpret the use of material property testing and hygrothermal simulations to judge freeze-thaw risks

3

## Housekeeping

---

- Slides will be available on website (<https://www.buildingscience.com/past-events>)
- Resources: list of links at end of presentation
- Questions—during plus reserved Q&A time at end

4

# Masonry Wall Insulation Background

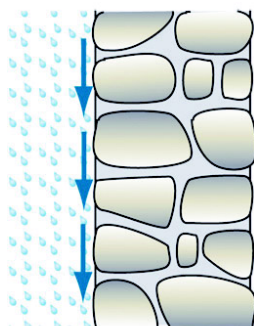
NESEA BE22 - Care & Feeding of Brick: Interior Insulation of Mass Masonry Buildings

© buildingscience.com 5

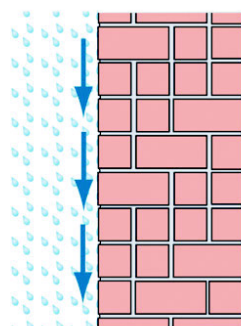
5

## Mass Walls (Rain Control)

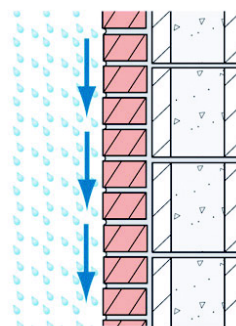
- Moisture is absorbed/safely stored during rain
- Moisture re-evaporates/dries while warmer
- No “drainage plane”



Rubble



Solid Masonry



Composite/  
Layered

NESEA BE22 - Care & Feeding of Brick: Interior Insulation of Mass Masonry Buildings

© buildingscience.com 6

6

## Inside or Outside Insulation?

- Insulating on exterior always preferable (masonry durability, condensation risks, thermal performance)
- Interior insulation → historic preservation reasons
- Interior → potential durability risks



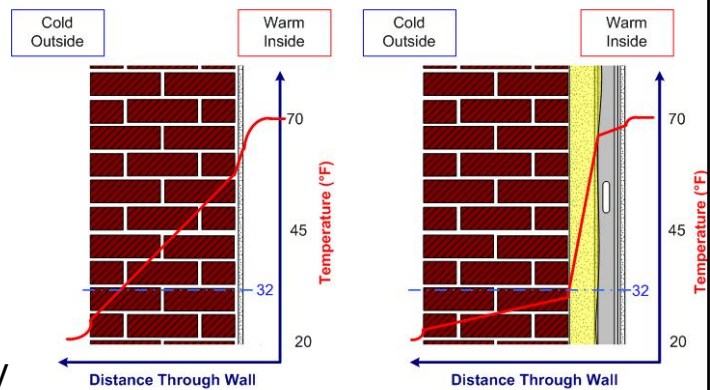
NESEA BE22 - Care & Feeding of Brick: Interior Insulation of Mass Masonry Buildings

© buildingscience.com

7

## Cold Climate Risks

- Freeze-thaw (colder + reduced drying)
- Air leakage condensation on interior face of masonry
- Rot/corrosion of embedded elements
- Covering interior → less early warning of damage problems in the wall



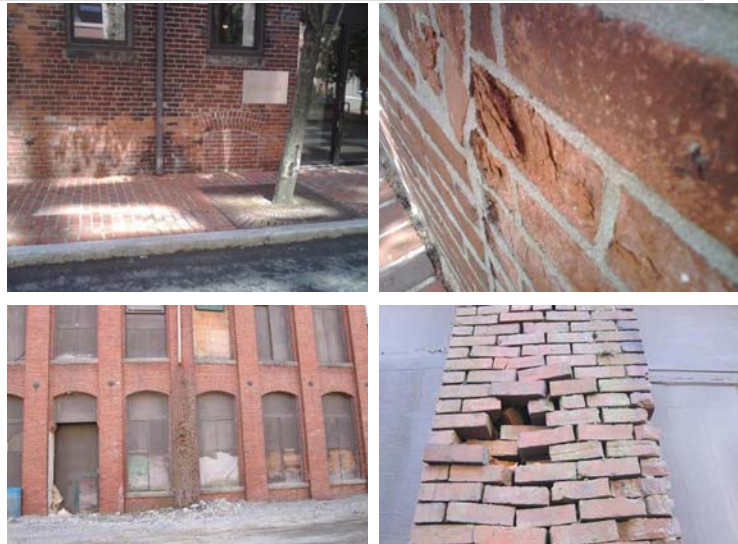
NESEA BE22 - Care & Feeding of Brick: Interior Insulation of Mass Masonry Buildings

© buildingscience.com

8

## Cold Climate Risks: Freeze-Thaw

- Below & above freezing cycling (actually ~23 F)
- Soaking wet brick
- Surface “flaking off”
- Brick more/less resistant to freeze-thaw
- $S_{crit}$  or critical degree of saturation measurement

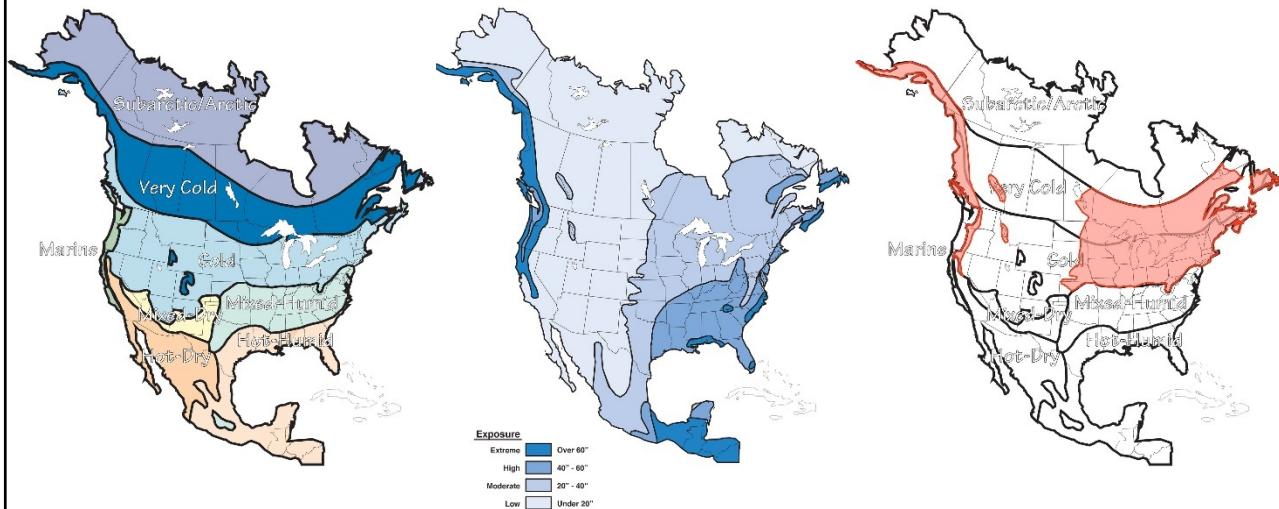


NESEA BE22 - Care & Feeding of Brick: Interior Insulation of Mass Masonry Buildings

9  
© buildingscience.com

9

## Geographic Risks



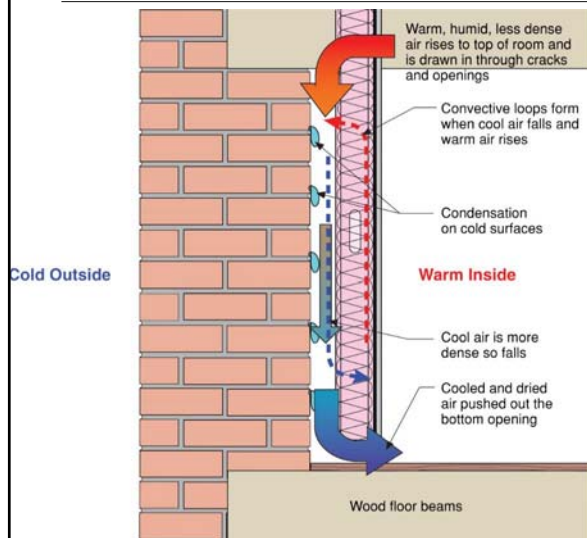
- Cold + rain = risks

NESEA BE22 - Care & Feeding of Brick: Interior Insulation of Mass Masonry Buildings

10  
© buildingscience.com

10

# Cold Climate Risks: Condensation



- Requires perfect workmanship at air barrier—around penetrations, etc.
- Made worse by air gap behind insulation (“chimney”)
- NOT RECOMMENDED**

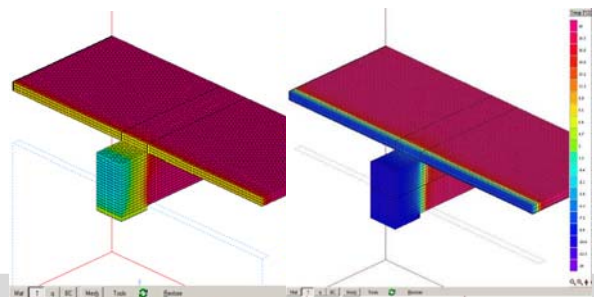
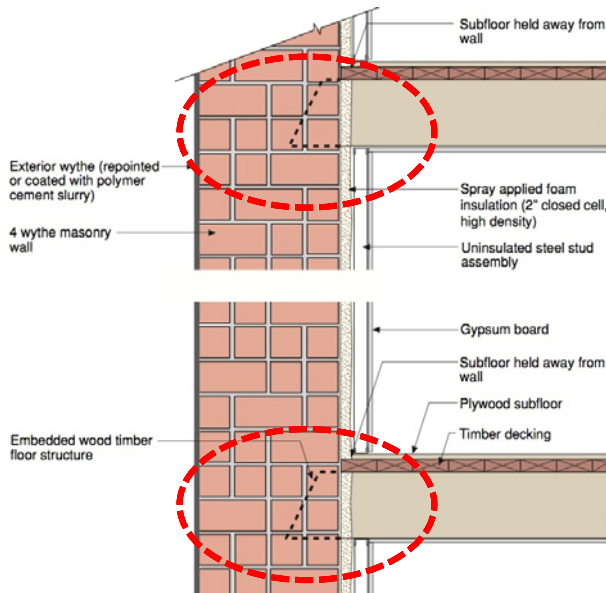


NESEA BE22 - Care & Feeding of Brick: Interior Insulation of Mass Masonry Buildings

11 © buildingscience.com

11

# Embedded Wood Member Risks



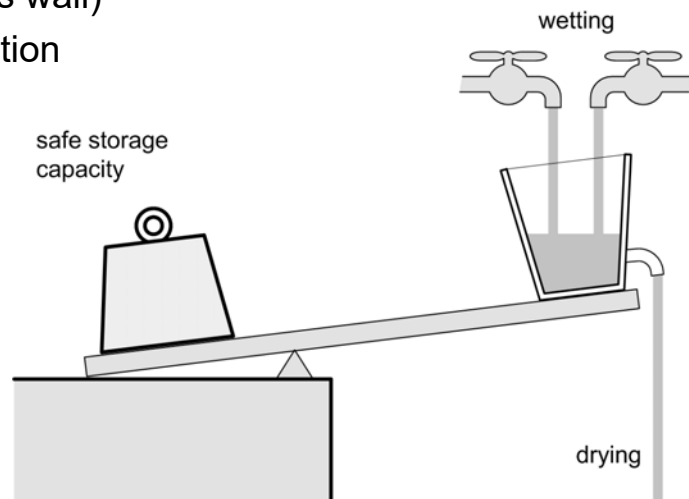
NESEA BE22 - Care & Feeding of Brick: Interior Insulation of Mass Masonry Buildings

12 © buildingscience.com

12

## The Moisture Balance

- Large storage capacity (mass wall)
- Drying decreases with insulation
  - Less heat flow in winter
  - Inhibited inward drying?
- Reduce/control wetting to compensate



NESEA BE22 - Care & Feeding of Brick: Interior Insulation of Mass Masonry Buildings

13  
© buildingscience.com

13

## Risk Assessment Process

NESEA BE22 - Care & Feeding of Brick: Interior Insulation of Mass Masonry Buildings

14  
© buildingscience.com

14

## Freeze-Thaw Risk Assessment Process

---

In order of importance:

- 1. Site Visit Assessment
- 2. Materials Tests & Modeling
- 3. Site Load Assessment
- 4. Prototype Monitoring
- 5. Retrofit and Repair (execution)
- 6. Maintenance and Repair

15

## 1. Site Visit

---

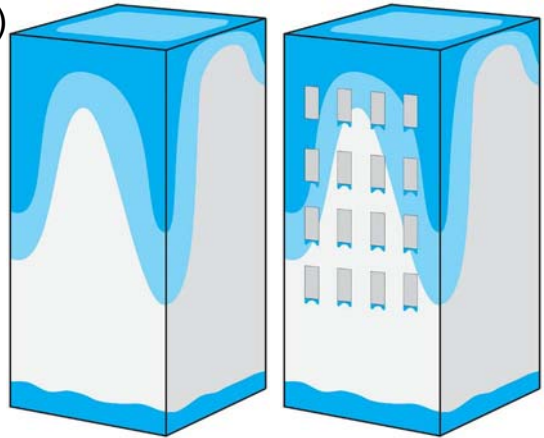
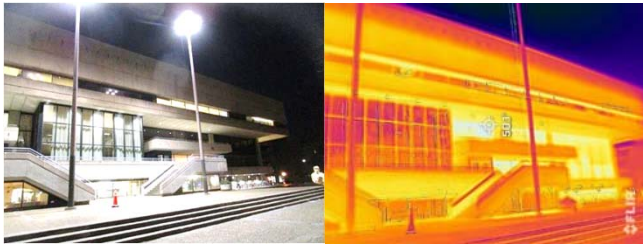
- Most important!
  - Walk around exterior and interior of the building
- Rain leaks?
  - Large/small, often/rare
- Freeze-thaw damage
  - parapet, chimney, at-grade, below windows

16



## Wetting Patterns: What Does the Building Tell Us?

- Where to look at the building (damage)
- “Where the building touches the ground and the sky”
- Add windows
- Parapets—cold & wet
- Unheated conditions



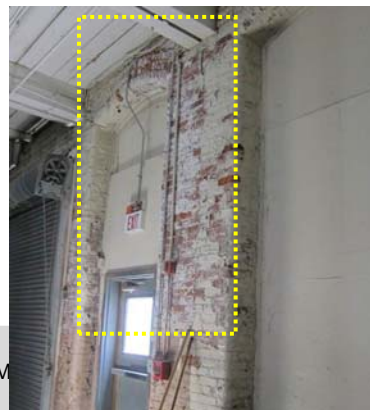
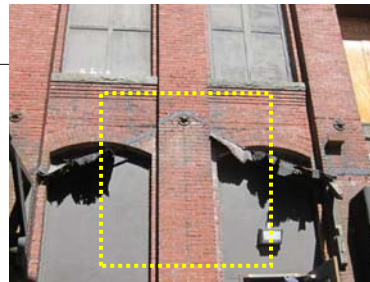
NESEA BE22 - Care & Feeding of Brick: Interior Insulation of Mass Masonry Buildings

17  
© buildingscience.com

17

## Water Concentrations

- Damage, interior and exterior



NESEA BE22 - Care & Feeding of Brick: Interior Insulation of M

18  
dingscience.com

18

## Existing Damage



- Where is it? Still active or not?
- Moisture meters to look for active/ ongoing leakage

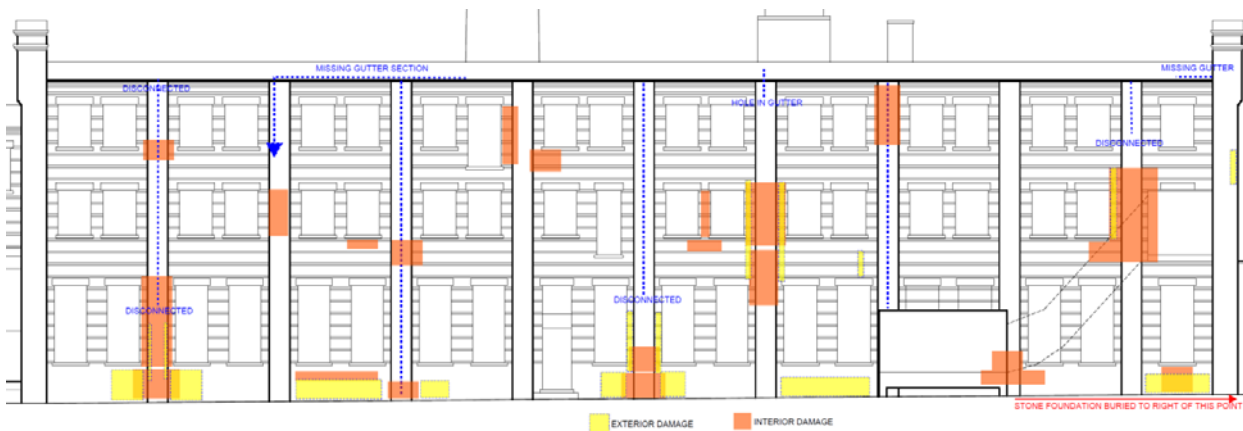
NESEA BE22 - Care & Feeding of Brick: Interior Insulation of Mass Masonry Buildings

19  
© buildingscience.com

19

## Existing Damage

- Map damage—can correlate to exterior drainage issues?
- If you can identify the source, you can fix it



NESEA BE22 - Care & Feeding of Brick: Interior Insulation of Mass Masonry Buildings

20  
© buildingscience.com

20

## “Darwinian” Brick Damage



- Most of the brick looks great
- Selected brick have spalling surfaces
- No pattern matching exposure
- Poorly-fired brick?
- “Culling of the herd”

NESEA BE22 - Care & Feeding of Brick: Interior Insulation of Mass Masonry Buildings

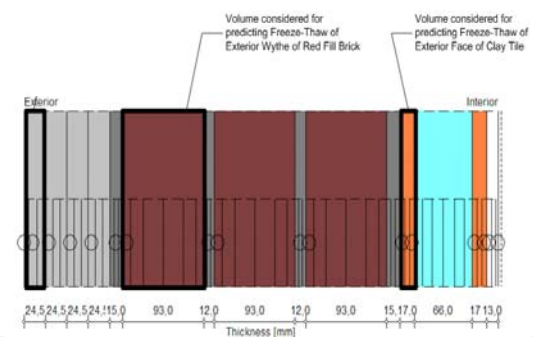
21  
© buildingscience.com

21

## Freeze-Thaw Risk Assessment Process

In order of importance:

- 1. Site Visit Assessment
- 2. Materials Tests & Modeling
- 3. Site Load Assessment
- 4. Prototype Monitoring
- 5. Retrofit and Repair (execution)
- 6. Maintenance and Repair



NESEA BE22 - Care & Feeding of Brick: Interior Insulation of Mass Masonry Buildings

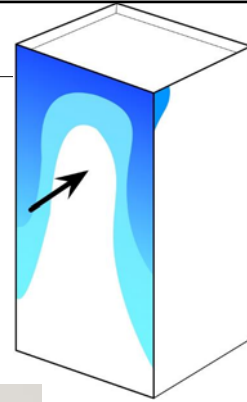
22  
© buildingscience.com

22

## Freeze-Thaw Risk Assessment Process

In order of importance:

- 1. Site Visit Assessment
- 2. Materials Tests & Modeling
- 3. Site Load Assessment
- 4. Prototype Monitoring
- 5. Retrofit and Repair (execution)
- 6. Maintenance and Repair



NESEA BE22 - Care & Feeding of Brick: Interior Insulation of Mass Masonry Buildings

23  
© buildingscience.com

23

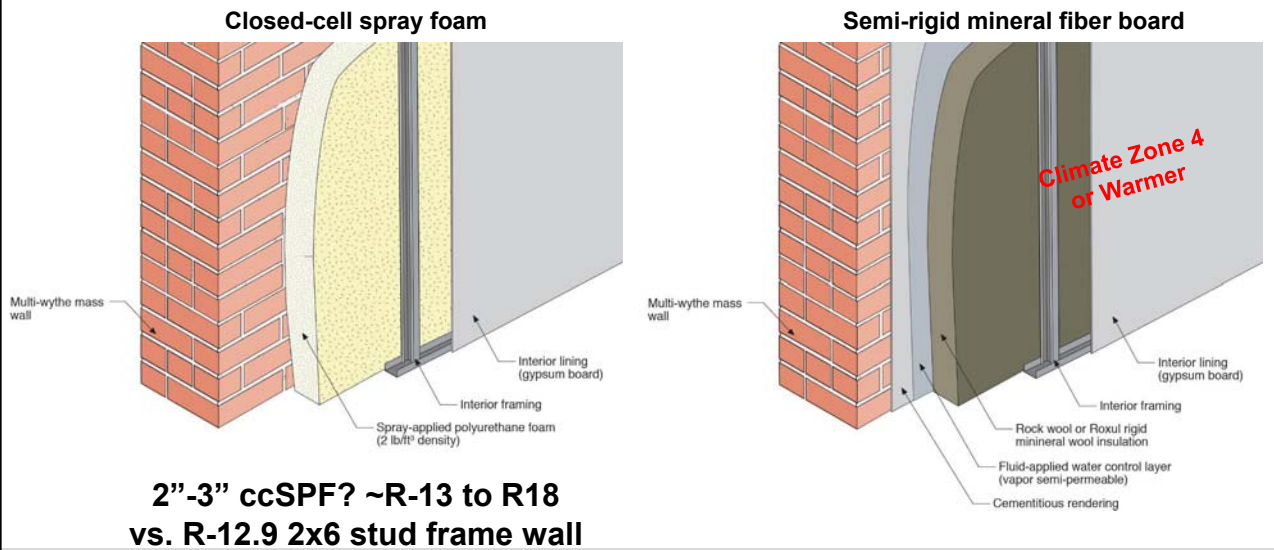
## Masonry Wall Assemblies

NESEA BE22 - Care & Feeding of Brick: Interior Insulation of Mass Masonry Buildings

24  
© buildingscience.com

24

# Masonry Interior Insulation Retrofit Assemblies

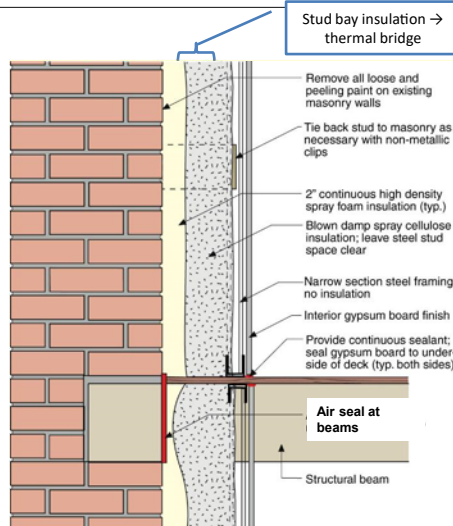


NESEA BE22 - Care & Feeding of Brick: Interior Insulation of Mass Masonry Buildings

25 © buildingscience.com

25

# Hybrid Wall Insulation Assembly

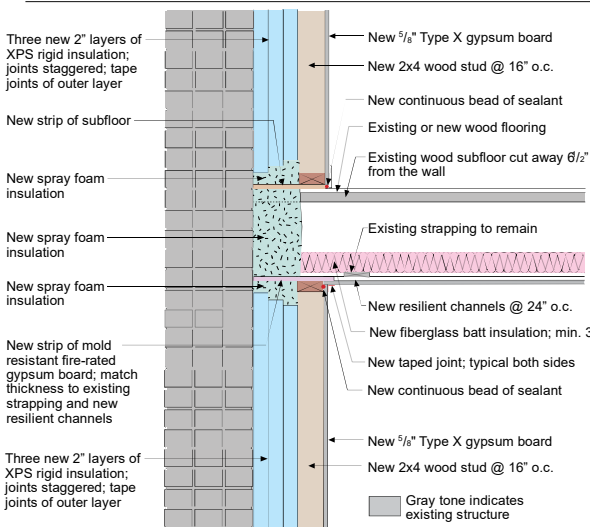


NESEA BE22 - Care & Feeding of Brick: Interior Insulation of Mass Masonry Buildings

26 © buildingscience.com

26

## Rigid Board Interior Retrofit



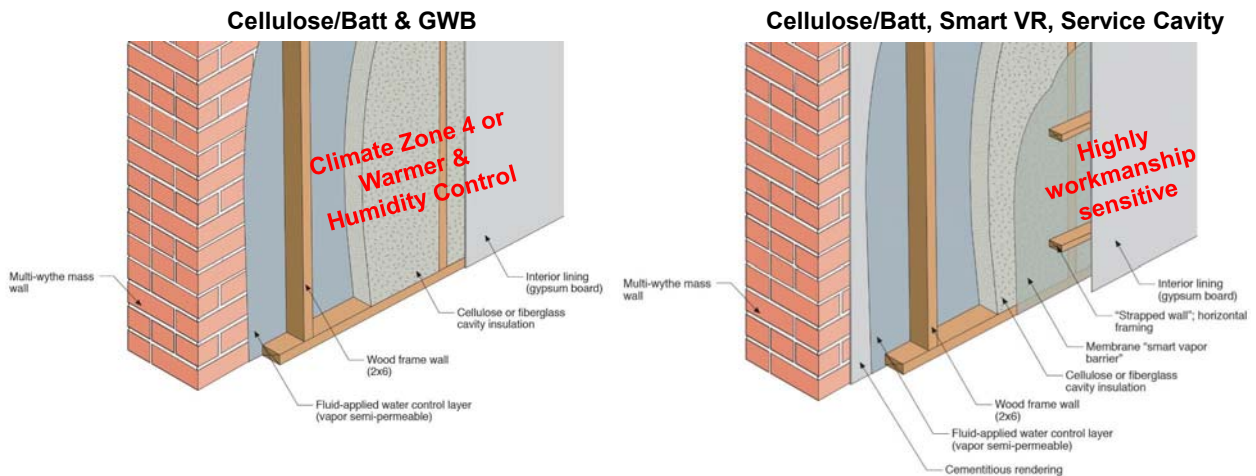
- Adhered, pin board to wall
- Much more labor (piece-work)
- Workmanship-sensitive
- Poor match for “bumpy” substrates

NESEA BE22 - Care & Feeding of Brick: Interior Insulation of Mass Masonry Buildings

27  
© buildingscience.com

27

## Masonry Interior Insulation Retrofit Assemblies

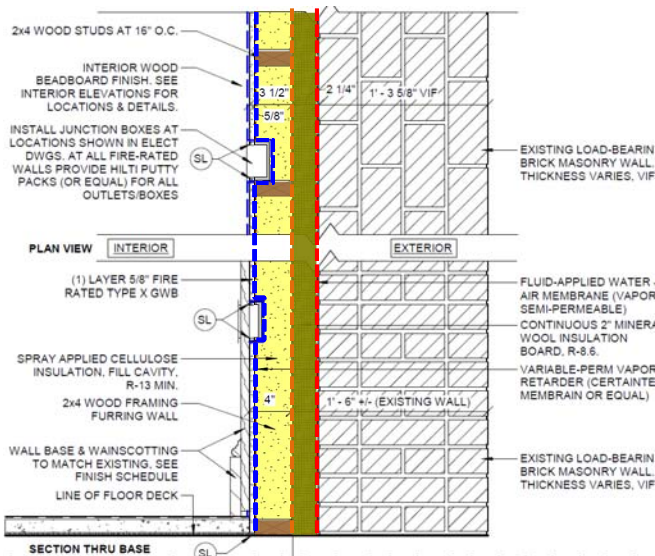


NESEA BE22 - Care & Feeding of Brick: Interior Insulation of Mass Masonry Buildings

28  
© buildingscience.com

28

## Mineral Fiber Retrofit Assembly



- Historic requirements limited build-in to 4 inches
- Requirement for high R-value (Passive House)
- Airtightness/air barrier requirements

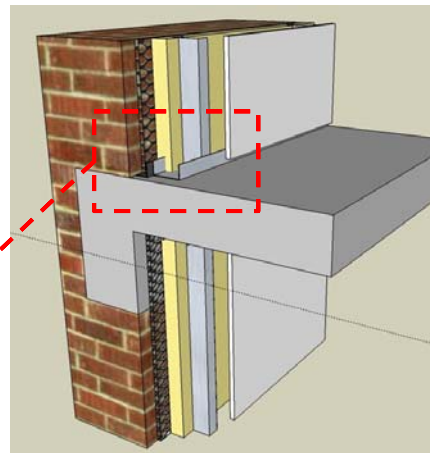
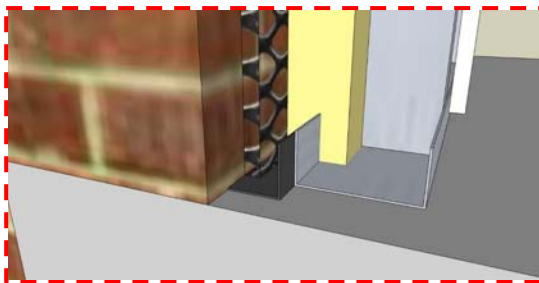
NESEA BE22 - Care & Feeding of Brick: Interior Insulation of Mass Masonry Buildings

29  
© buildingscience.com

29

## Rain Control-Interior Drainage?

- Don't change a successful mass rain control to a problematic drained one!
- Flashing, weeps, etc.
- Neither robust nor simple assembly



NESEA BE22 - Care & Feeding of Brick: Interior Insulation of Mass Masonry Buildings

30  
© buildingscience.com

30

## Injection/Poured Foam Behind Existing Plaster



- Small ~1" holes
- Limited insulation thickness (~1")
- Need "slow rise" formula
- Airtightness improvement
- Interrupted by existing furring/framing
- Quality control (infrared camera for complete fill)
- Talk to Henri Fennell!

NESEA BE22 - Care & Feeding of Brick: Interior Insulation of Mass Masonry Buildings

31  
© buildingscience.com

31

## Windows

NESEA BE22 - Care & Feeding of Brick: Interior Insulation of Mass Masonry Buildings

32  
© buildingscience.com

32



## Wetting Patterns: Windows



NESEA BE22 - Care & Feeding of Brick: Interior Insulation of Mass Masonry Buildings

33  
© buildingscience.com

33

## Testing Window Runoff Patterns



- Water squirt bottle testing
- Add infrared in some cases
- Often matches existing staining and damage patterns

NESEA BE22 - Care & Feeding of Brick: Interior Insulation of Mass Masonry Buildings

34  
© buildingscience.com

34

## Nature-Provided Window Runoff Testing



- Tricky part—catching building after the “right” amount of rainfall
- Outdoor temperature and sun too (T rising/falling)

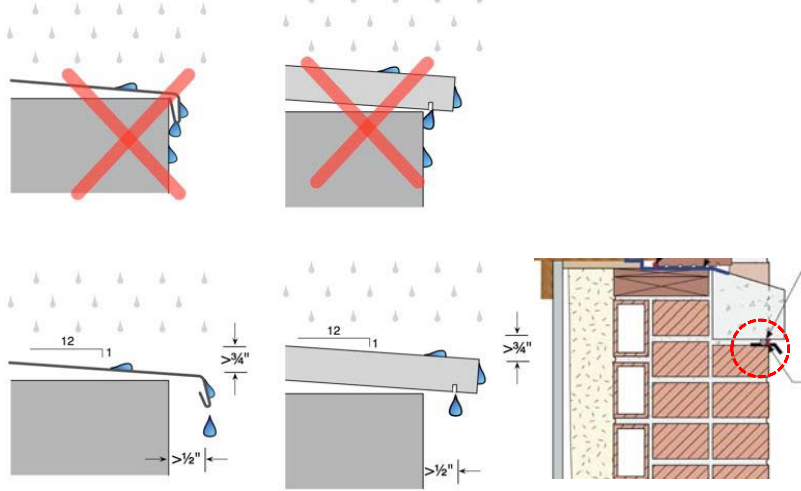
NESEA BE22 - Care & Feeding of Brick: Interior Insulation of Mass Masonry Buildings

35  
© buildingscience.com

35

## Drip Edges

- Minimum projection of drip edge



NESEA BE22 - Care & Feeding of Brick: Interior Insulation of Mass Masonry Buildings

36  
© buildingscience.com

36

## Rowlock Window Sills



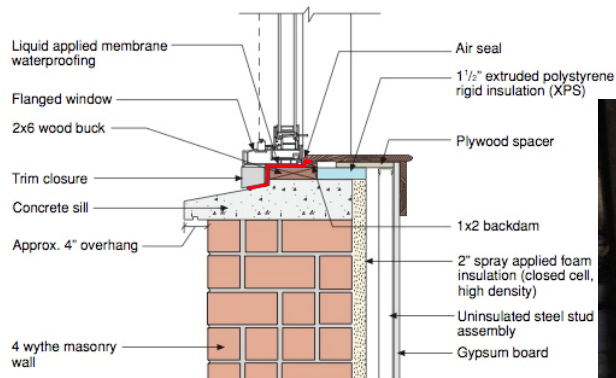
- Rowlock = many mortar joints, facing sky, taking window runoff
- Much worse water management than stone/cast stone sills
- Overclad with metal
- Add drip edge

NESEA BE22 - Care & Feeding of Brick: Interior Insulation of Mass Masonry Buildings

37  
© buildingscience.com

37

## Windows (Potential Rain Entry Point)



- Adhered membrane or fluid applied rough opening “wrap”



NESEA BE22 - Care & Feeding of Brick: Interior Insulation of Mass Masonry Buildings

38  
© buildingscience.com

38

# Embedded Wood Joists

NESEA BE22 - Care & Feeding of Brick: Interior Insulation of Mass Masonry Buildings

39  
© buildingscience.com

39

## Embedded Joists



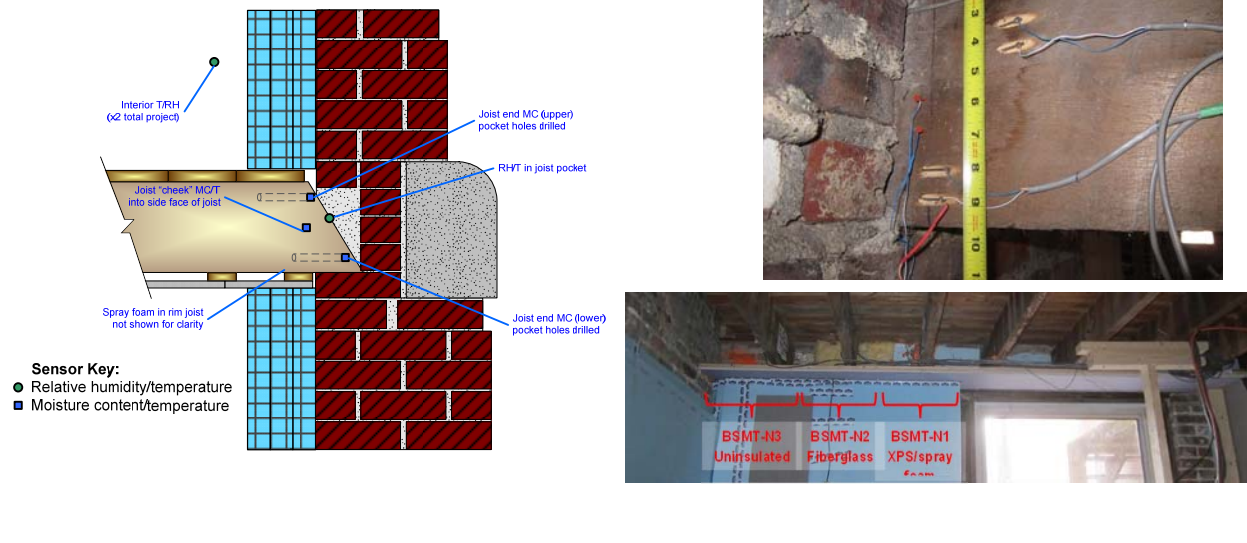
- Steel or iron bearing plates, saddle connectors
- Connecting wood to below-grade masonry → composting your framing

NESEA BE22 - Care & Feeding of Brick: Interior Insulation of Mass Masonry Buildings

40  
© buildingscience.com

40

## Embedded Joist End Monitoring



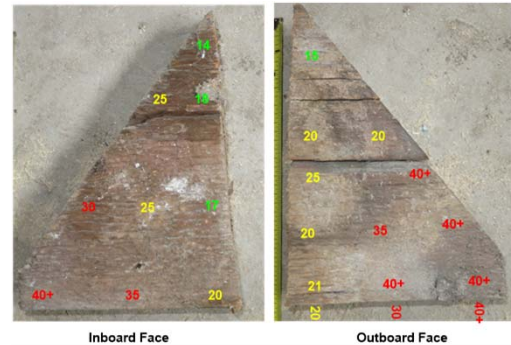
NESEA BE22 - Care & Feeding of Brick: Interior Insulation of Mass Masonry Buildings

41  
© buildingscience.com

41

## Embedded Joist End Monitoring Results

- Insulation makes wood wetter
- Heating dries wood
- Wood wettest in summer (!)
- Orientation-sensitive (N/S/E/W)
- Brick wall vs. hollow block wall
- Embedded wood is already wet (40%+ MC) & moldy in uninsulated walls
- Durability of old-growth timber
- **Damage reported only with macroscopic cracks at masonry**

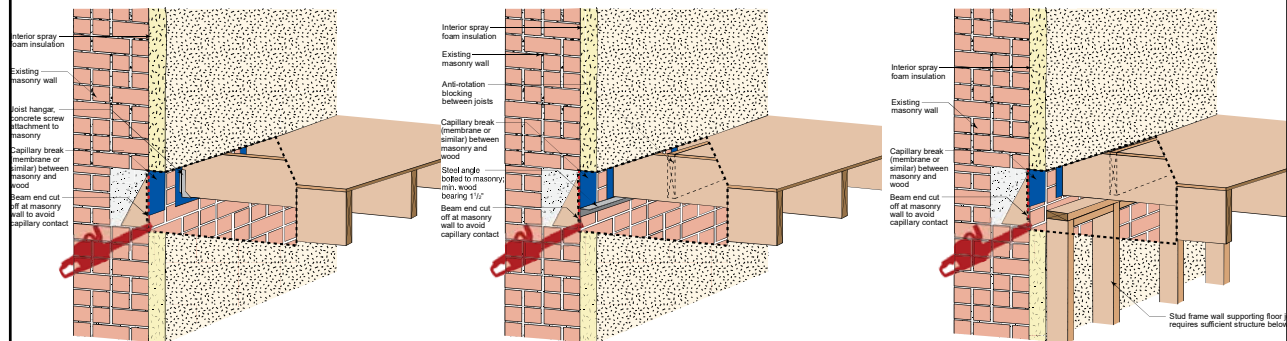


NESEA BE22 - Care & Feeding of Brick: Interior Insulation of Mass Masonry Buildings

42  
© buildingscience.com

42

## Joist End “Nuclear Options” for Retrofits



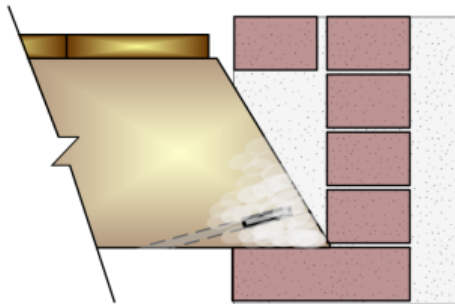
- Joist hangers into masonry
- Steel ledger
- Structural frame wall inboard of masonry

NESEA BE22 - Care & Feeding of Brick: Interior Insulation of Mass Masonry Buildings

43  
© buildingscience.com

43

## Borate Preservative Rods at Embedded Wood



- Currently commonly used in outdoor wood/timber structures (bridges)
- Water soluble; dissolves into wood when wetted
- Drilling holes → is wood joist already punky?

NESEA BE22 - Care & Feeding of Brick: Interior Insulation of Mass Masonry Buildings

44  
© buildingscience.com

44

## Parallel Ledger Condition



- Leaving parallel ledger uninsulated?
- Wood on “warm and dry” side, open drying to interior
- Sacrifice of thermal performance for moisture/durability performance

NESEA BE22 - Care & Feeding of Brick: Interior Insulation of Mass Masonry Buildings

45  
© buildingscience.com

45

## New Ledger Condition



- Sandwich rigid foam between brick and wood ledger
- Wood is on “warm and dry” side, wicking from masonry
- Structural thermal break if conservative designers (Armatherm, etc.)

NESEA BE22 - Care & Feeding of Brick: Interior Insulation of Mass Masonry Buildings

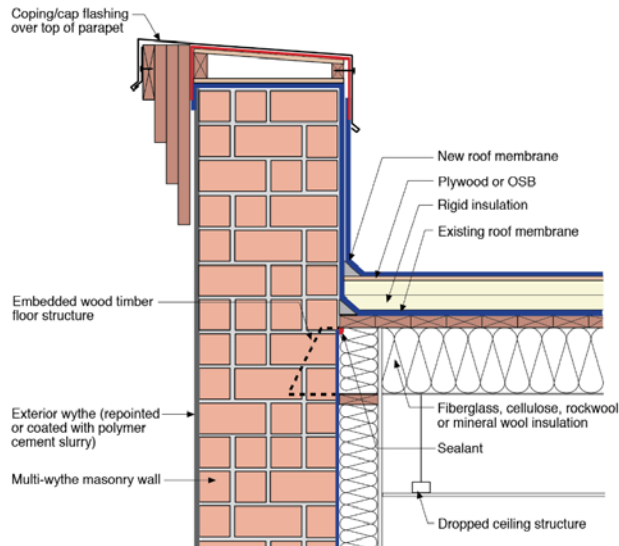
46  
© buildingscience.com

46

# Other Tricky Enclosure Items

47

## Roof Copings



48



## Band or Cornice Details



- Sky-facing mortar joints will leak over time
- Injects water deep into wall

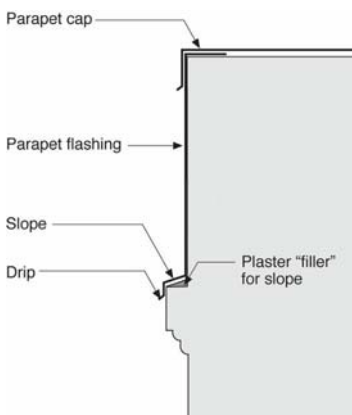


NESEA BE22 - Care & Feeding of Brick: Interior Insulation of Mass Masonry Buildings

49  
© buildingscience.com

49

## Band or Cornice Overclad Option



- Metal overclad with drip edge
- Water control layer (membrane or fluid) on topside of sky-facing surface?
- Historical pushback?

NESEA BE22 - Care & Feeding of Brick: Interior Insulation of Mass Masonry Buildings

50  
© buildingscience.com

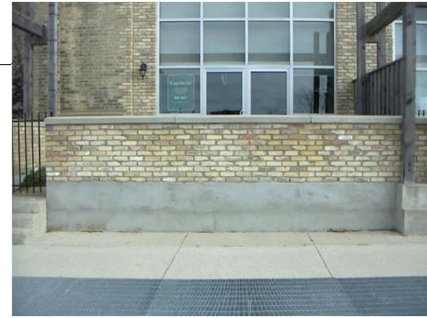
50

## Interior Brick Exposed to Exterior

- Or reusing salvaged brick



See Canadian Building Digest 138: On Using Old Bricks in New Buildings  
Detroit brick salvaging operations



NESEA BE22 - Care & Feeding of Brick: Interior Insulation of Mass Masonry Buildings

51  
© buildingscience.com

51

## Grade Contact (Wicking Brick)



- Brick is a “dense sponge”
- Capillary wicking through brick
- Plants growing into brick = plants think your building is dirt

NESEA BE22 - Care & Feeding of Brick: Interior Insulation of Mass Masonry Buildings

52  
© buildingscience.com

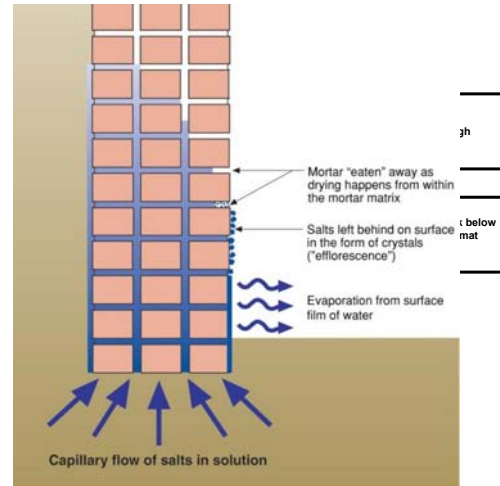
52

## Grade Contact Conditions

Firehouse



Syndicate

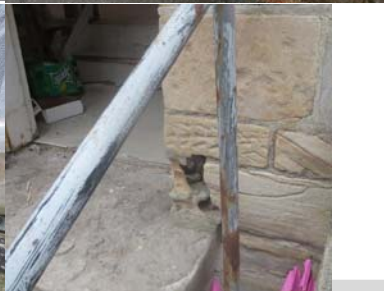
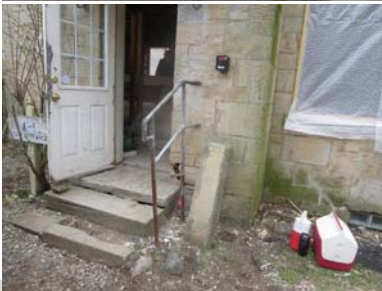
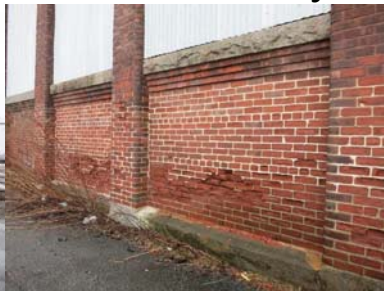


NESEA BE22 - Care & Feeding of Brick: Interior Insulation of Mass Masonry Buildings

53  
© buildingscience.com

53

## Salt Effects on Stone & Masonry



- De-icing salts typical problem
- Localized around walking areas, steps, parking lots
- Massive F-T increase



NESEA BE22 - Care & Feeding of Brick: Interior Insulation of Mass Masonry Buildings

54  
© buildingscience.com

54

## Intrinsically Vulnerable Materials (Brownstone)



- NYC architects working in Maine
- Sandstone easy to cut & carve
- Weathers easily too!



NESEA BE22 - Care & Feeding of Brick: Interior Insulation of Mass Masonry Buildings

55  
© buildingscience.com

55

## Cleaning and Repointing

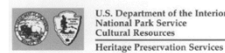
- Cleaning—"as gently as possible"
- Match cleaning agent to substrate type (brick vs. various stone types)
- Damaging cleaning—e.g., sandblasting; strips hard surface
- Repointing (as needed)
- Soft vs. hard mortars
- National Park Service Preservation Briefs 1 & 2



### 2 PRESERVATION BRIEFS

Repointing Mortar Joints in Historic Masonry Buildings

Robert C. Mack, FAIA  
John P. Speweik

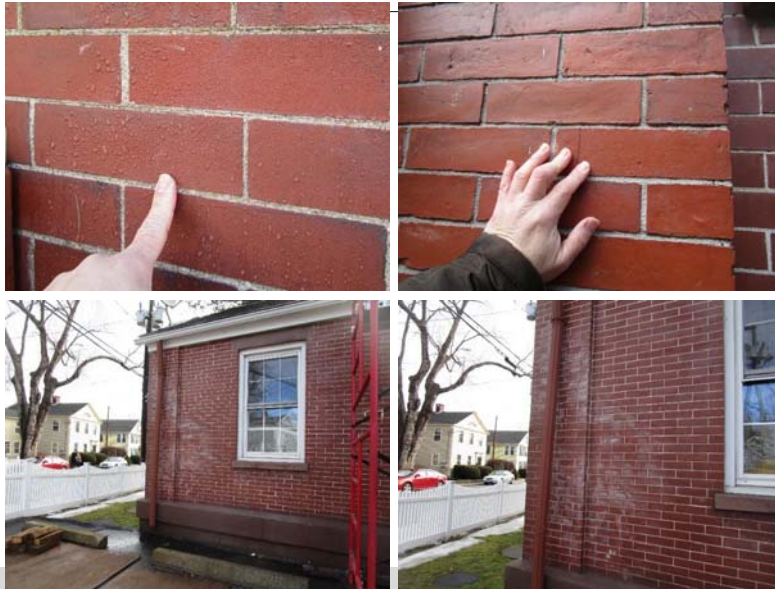


NESEA BE22 - Care & Feeding of Brick: Interior Insulation of Mass Masonry Buildings

56  
© buildingscience.com

56

## Clear Coatings (Silanes & Siloxanes)



- Can make masonry surfaces water repellent
- Some practitioners report great success
- “Glossy” surface
- Ongoing maintenance
- Overwhelm with water → “haze” or “fogging” (water trying to dry outward)

NESEA BE22 - Care & Feeding of Brick: Interior Insulation of Mass Masonry Buildings

57  
© buildingscience.com

57

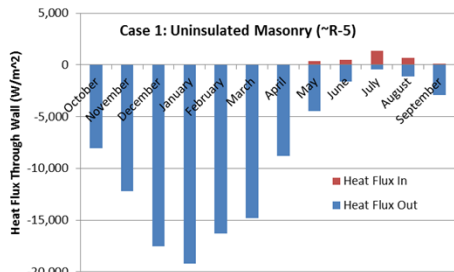
## Energy and Thermal Performance

NESEA BE22 - Care & Feeding of Brick: Interior Insulation of Mass Masonry Buildings

58  
© buildingscience.com

58

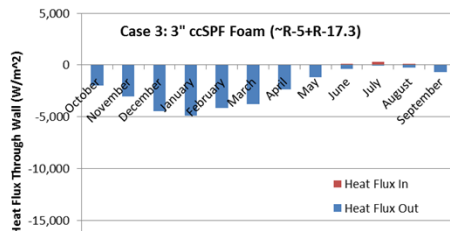
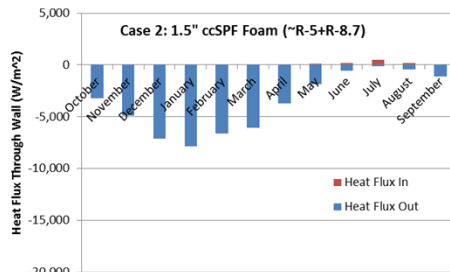
# Do We Need to Insulate Mass Walls?



Climate: Burlington, VT

Case 2 (add 1.5" ccSPF, R-8.7)  $\approx$  60% reduction in heat flow through walls vs. uninsulated case

Case 3 (add 3" ccSPF, R-17.3)  $\approx$  75% reduction in heat flow through walls vs. uninsulated case



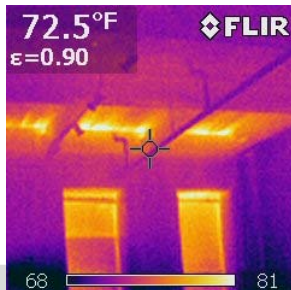
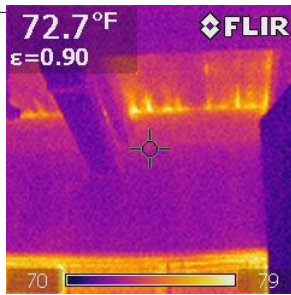
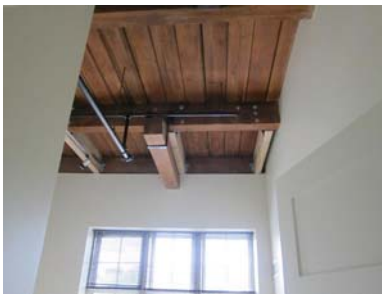
**Mass vs. no mass  $\rightarrow$  Adds  $\sim$ R-1**

NESEA BE22 - Care & Feeding of Brick: Interior Insulation of Mass Masonry Buildings

59 © buildingscience.com

59

## Air Barrier Issues



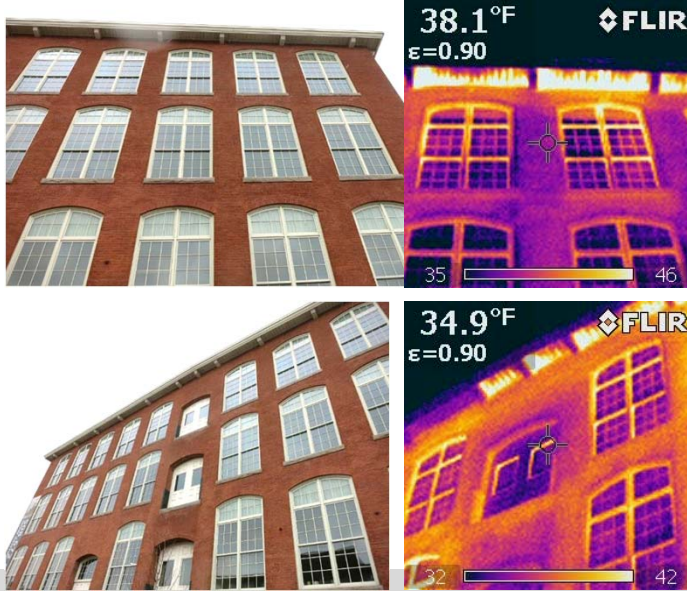
- Can't rely on masonry alone to be an air barrier
- 13" brick wall, 100 sf = **3.1 sq. in.** leakage EqLA
- Same with 3 coat plaster = **0.054 sq. in.** EqLA
- Source: CBD-23. Air Leakage in Buildings

NESEA BE22 - Care & Feeding of Brick: Interior Insulation of Mass Masonry Buildings

60 © buildingscience.com

60

# Air Barrier Issues



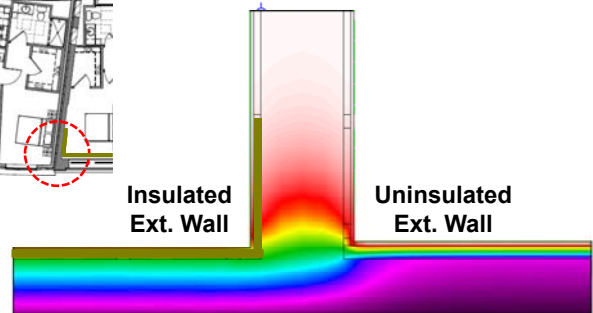
- Spray foam doesn't do anything if it is not there!
- Incorporating tongue & groove boards into air barrier → difficult
- Drilled holes at joints + seal?



NESEA BE22 - Care & Feeding of Brick: Interior Insulation of Mass Masonry Buildings

61

# Masonry Thermal Bridges

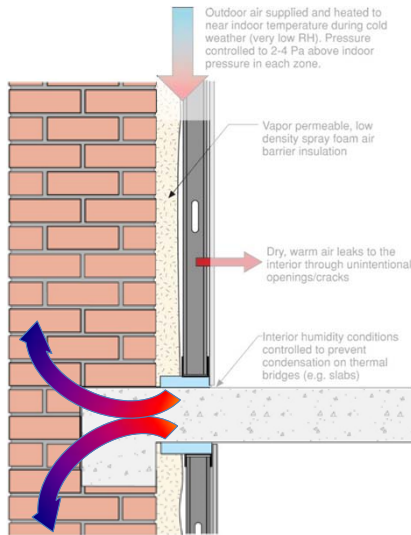


Add tee wall "wrap" for flanking loss

NESEA BE22 - Care & Feeding of Brick: Interior Insulation of Mass Masonry Buildings

62

# Thermal Bridging at Slab Floors



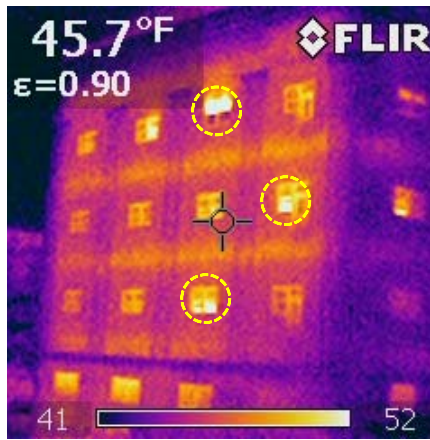
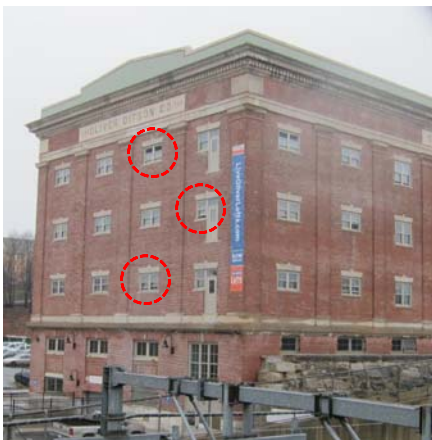
- Thermal bridge built into structure
- Can't remediate w/o "heroic measures"

NESEA BE22 - Care & Feeding of Brick: Interior Insulation of Mass Masonry Buildings

63 © buildingscience.com

63

# Thermal Bridging at Slab Floors



R-20 for 10 foot wall  
 R-3 for 1 foot floor slab  
**R-13 overall R value**

NESEA BE22 - Care & Feeding of Brick: Interior Insulation of Mass Masonry Buildings

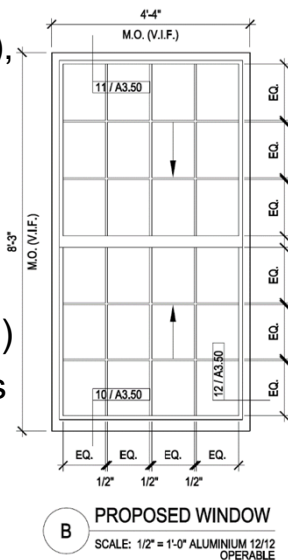
64 © buildingscience.com

64



## Window Heat Loss in Context

- Large windows (4' x 8'), high glass %
- Can't change frame profile (historic)
- Aluminum, double, low E:  $U \approx 0.5$  (center of glass U-0.30)
- R-2 holes in R-20 walls



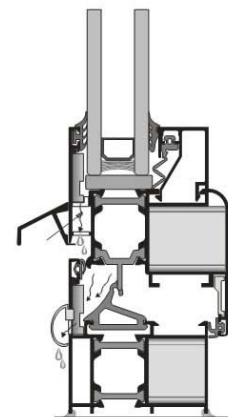
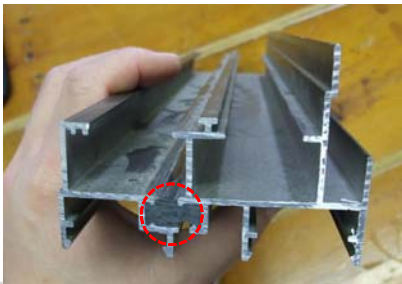
NESEA BE22 - Care & Feeding of Brick: Interior Insulation of Mass Masonry Buildings

65  
© buildingscience.com

65

## Window Heat Loss in Context

- Improved thermal breaks, edge spacers
- Improved center-of-glass (triple, films, etc.)
- All add cost; not typical construction
- Alternate frame materials?
- Historic restrictions common

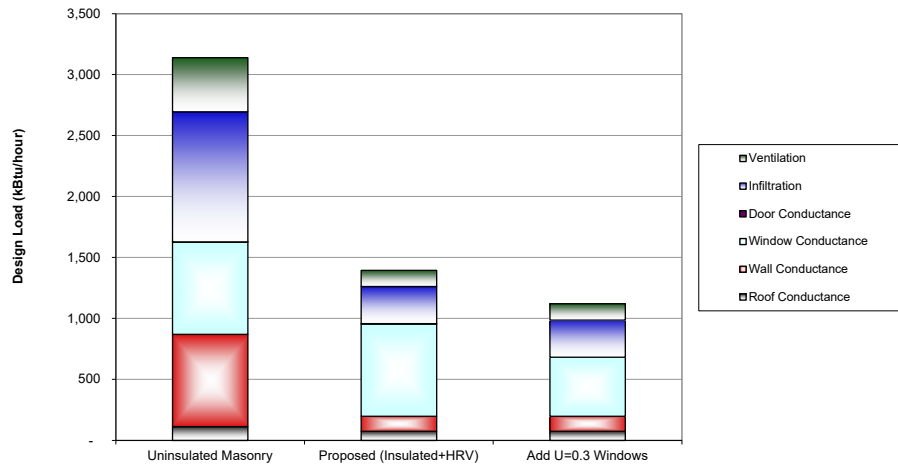


NESEA BE22 - Care & Feeding of Brick: Interior Insulation of Mass Masonry Buildings

66  
© buildingscience.com

66

## Wintertime Heat Loads by Component

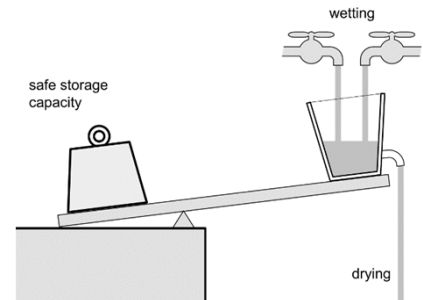


- Basic UA analysis (U-factor × area)

## Conclusions

## Conclusions

- Yes, you can insulate mass masonry on the inside
- Outside is better (durability, energy performance), but is a non-starter in cases
- Balance out decreased drying with decreased wetting (exterior water control)
- So... many... details...
- Then, many options for interior insulation
- In some cases: don't make an old building something it shouldn't be (built-in thermal bridges, marginal masonry)



NESEA BE22 - Care & Feeding of Brick: Interior Insulation of Mass Masonry Buildings

69  
© buildingscience.com

69

# Questions?

Kohta Ueno  
kohta (at sign) buildingscience dot com

This presentation will be available at <http://buildingscience.com/past-events>

NESEA BE22 - Care & Feeding of Brick: Interior Insulation of Mass Masonry Buildings

70  
© buildingscience.com

70

## Document Resources

- Building Science Digest 114: Interior Insulation Retrofits of Load-Bearing Masonry Walls In Cold Climates  
<http://www.buildingscience.com/documents/digests/bsd-114-interior-insulation-retrofits-of-load-bearing-masonry-walls-in-cold-climates>
- Building Science Insight 047: Thick as a Brick  
<http://www.buildingscience.com/documents/insights/bsi-047-thick-as-brick/>
- Building Science Insight 080: Tailor Made  
<http://buildingscience.com/documents/insights/bsi080-tailor-made>
- Building Science Insight 095: How Buildings Age  
<http://buildingscience.com/documents/building-science-insights/bsi-095-how-buildings-age>
- Building Science Insight 105: Avoiding Mass Failures  
<https://www.buildingscience.com/documents/building-science-insights/bsi-105-avoiding-mass-failures>
- Building Science Insight 011: Capillarity—Small Sacrifices  
<https://www.buildingscience.com/documents/insights/bsi-011-capillarity-small-sacrifices>

71

## Document Resources

- Building America Report 1105: Internal Insulation of Masonry Walls: Final Measure Guideline  
<http://www.buildingscience.com/documents/reports/rr-1105-internal-insulation-masonry-walls-final-measure-guideline/>
- Building America Report 1307: Interior Insulation of Mass Masonry Walls: Joist Monitoring, Material Test Optimization, Salt Effects  
<https://buildingscience.com/documents/bareports/ba-1307-interior-insulation-mass-masonry-walls/view>
- Building America Report 1508: Analysis of Joist Masonry Moisture Content Monitoring  
<https://buildingscience.com/documents/building-america-reports/ba-1508-analysis-joist-masonry-moisture-content-monitoring>
- Building America Expert Meeting Report: Recommended Approaches to the Retrofit of Masonry Wall Assemblies  
[https://www.buildingscience.com/sites/default/files/bsc\\_to2\\_1\\_3\\_final\\_expert\\_meeting\\_report.pdf](https://www.buildingscience.com/sites/default/files/bsc_to2_1_3_final_expert_meeting_report.pdf)
- Green Building Advisor: Insulation Retrofits on Old Masonry Buildings: Building Science Podcast  
<http://www.greenbuildingadvisor.com/blogs/dept/building-science/insulation-retrofits-old-masonry-buildings-building-science-podcast>
- Canadian Building Digest 138. On Using Old Bricks in New Buildings  
[http://web.mit.edu/parmstr/Public/NRCan/CanBldgDigests/cbd138\\_e.html](http://web.mit.edu/parmstr/Public/NRCan/CanBldgDigests/cbd138_e.html)
- National Park Service Preservation Brief 1: Cleaning and Water-Repellent Treatments for Historic Masonry Buildings  
<https://www.nps.gov/tps/how-to-preserve/briefs/1-cleaning-water-repellent.htm>
- National Park Service Preservation Brief 2: Repointing Mortar Joints in Historic Masonry Buildings  
<https://www.nps.gov/tps/how-to-preserve/briefs/2-repoint-mortar-joints.htm>

72

## Document Resources (Exterior Retrofits)

---

- Building Science Insight 079: Deep-Dish Retrofits  
<https://buildingscience.com/documents/insights/bsi079-deep-dish-retrofits>
- Building Science Insight 048: Exterior Spray Foam  
<https://buildingscience.com/documents/insights/bsi-048-exterior-spray-foam>
- Building Science Insight 013: Face Lift for Old Buildings  
<https://buildingscience.com/documents/insights/bsi-013-face-lift-for-old-buildings>
- BA-1106: Leveraging Limited Scope for Maximum Benefit in Occupied Renovation of Uninsulated Cold Climate Multifamily Housing  
<https://www.buildingscience.com/documents/bareports/ba-1106-winn-development-retrofit-community-final-report/view>
- 2017-11-16 03 Castle Square - Mid Rise  
[https://www.buildingscience.com/sites/default/files/2017-11-16\\_03\\_castle\\_square\\_-\\_mid\\_rise.pdf](https://www.buildingscience.com/sites/default/files/2017-11-16_03_castle_square_-_mid_rise.pdf)